



Enterprise Governance and IRM Round Table – CIO Day 2011

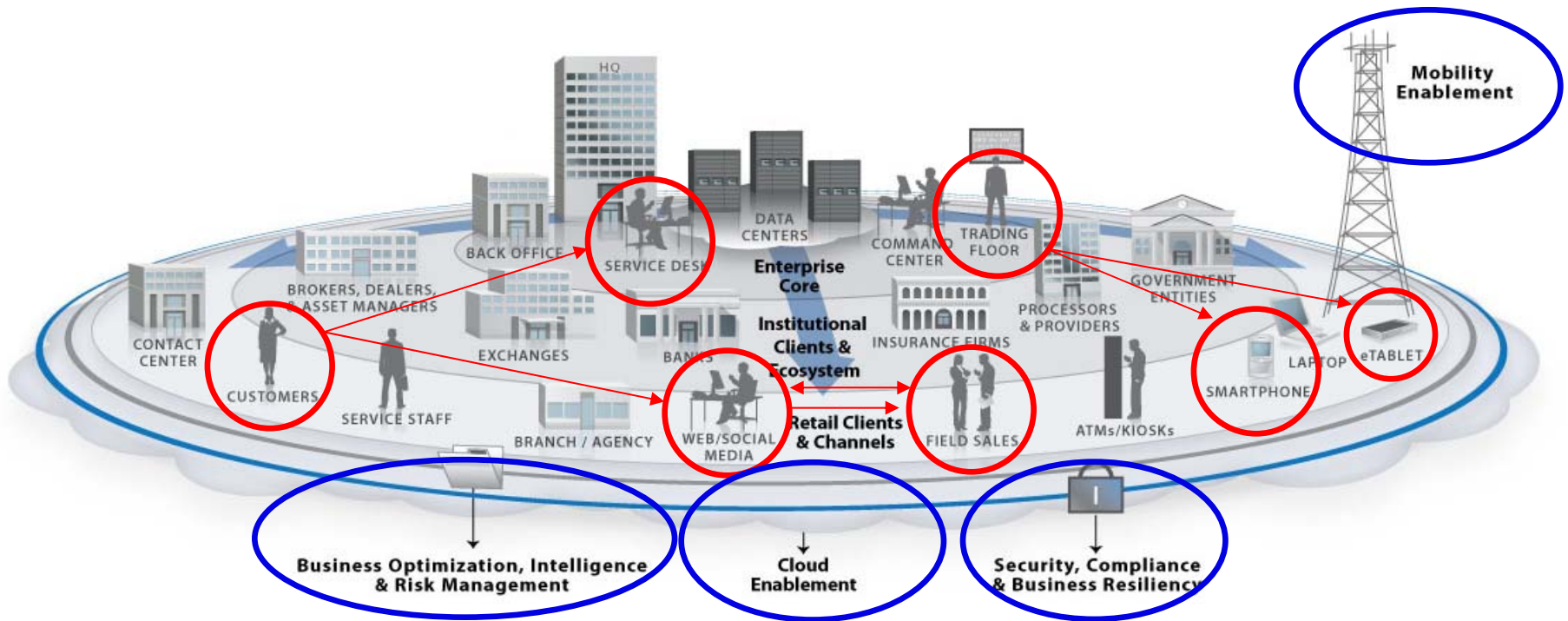


With complex business models, regulatory pressure, a transformed threat landscape and consumerisation, *Information Risk Management in Enterprise Governance* is a critical success factor. Doing this requires *the 5 I's, Awareness and Responsiveness*



Extended Enterprise Landscape

Assurance in an increasingly complex world



Sustain your competitive advantage by capturing and connecting the next generation of “one-click” users and devices to *your* services

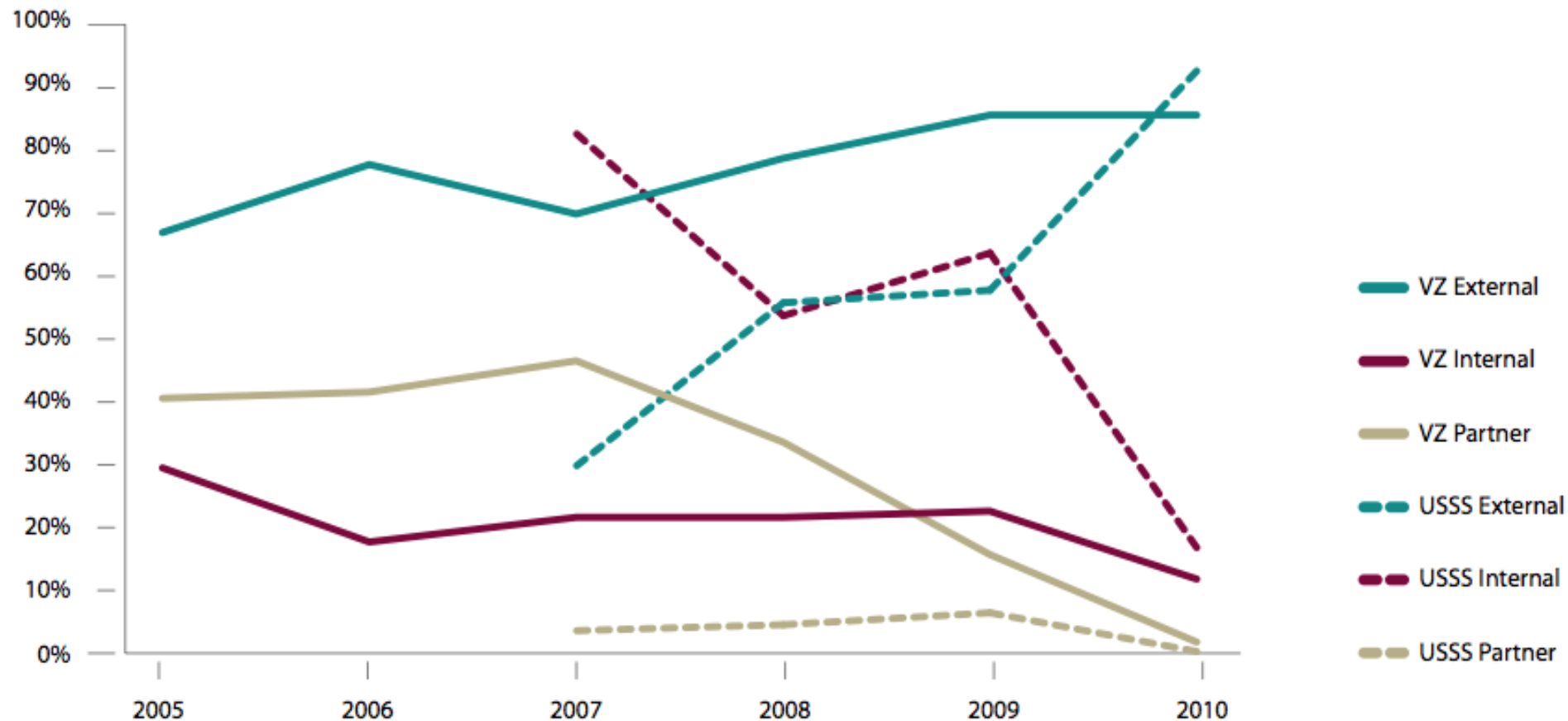
With so many touch-points the winning businesses are dependable and agile. They think globally to fulfil locally





Theme 1 - Emerging Threats Intelligence State of the Business: threat trends

Figure 8. Threat agents over time by percent of breaches





Theme 1 - Emerging Threats Intelligence Measuring and managing information risk

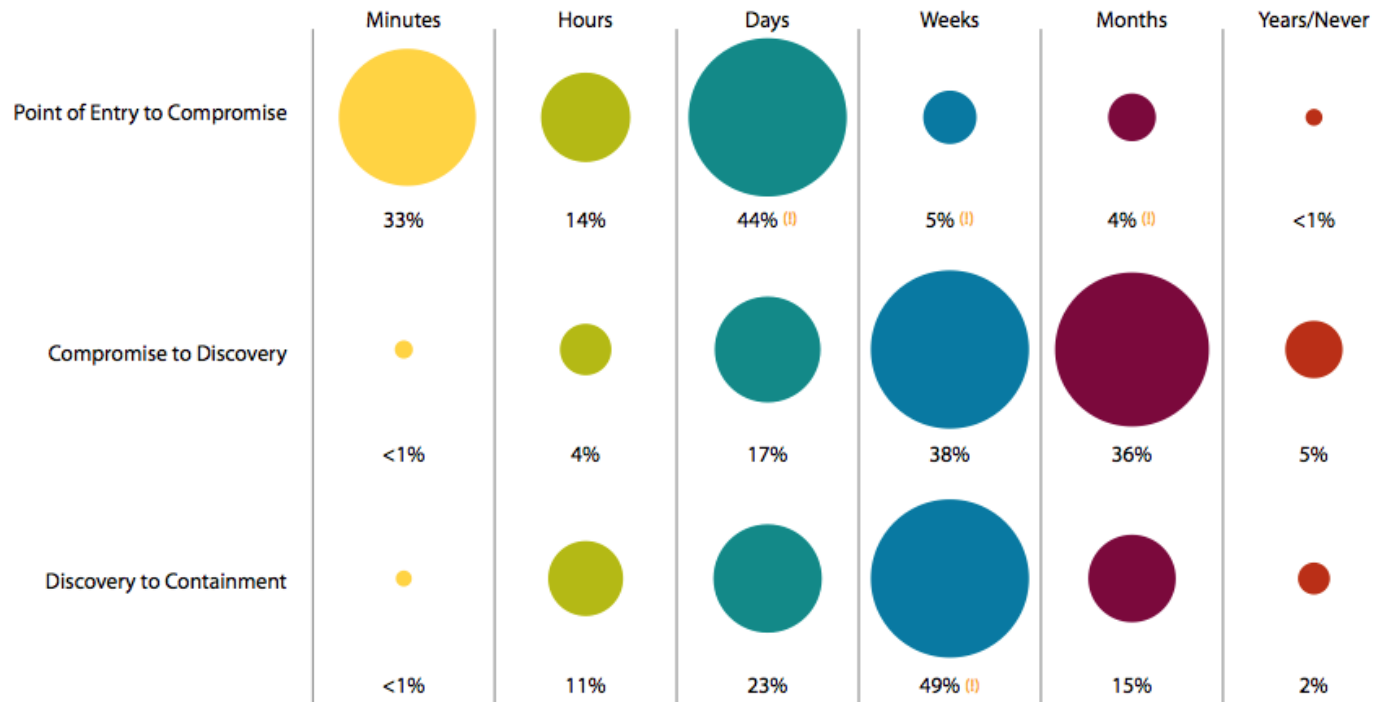
To properly manage risk,
we must measure it.

To properly measure risk,
we must understand our
information *assets*, the
threats that can harm
them, the *impact* of such
events, and the *controls*
that offer protection.



- Amount of pre-attack research varies
- Data compromised within hours/days after breaching perimeter
- Breaches go undiscovered for months
- It typically takes days to weeks to contain a breach

Figure 37. Timespan of events by percent of breaches

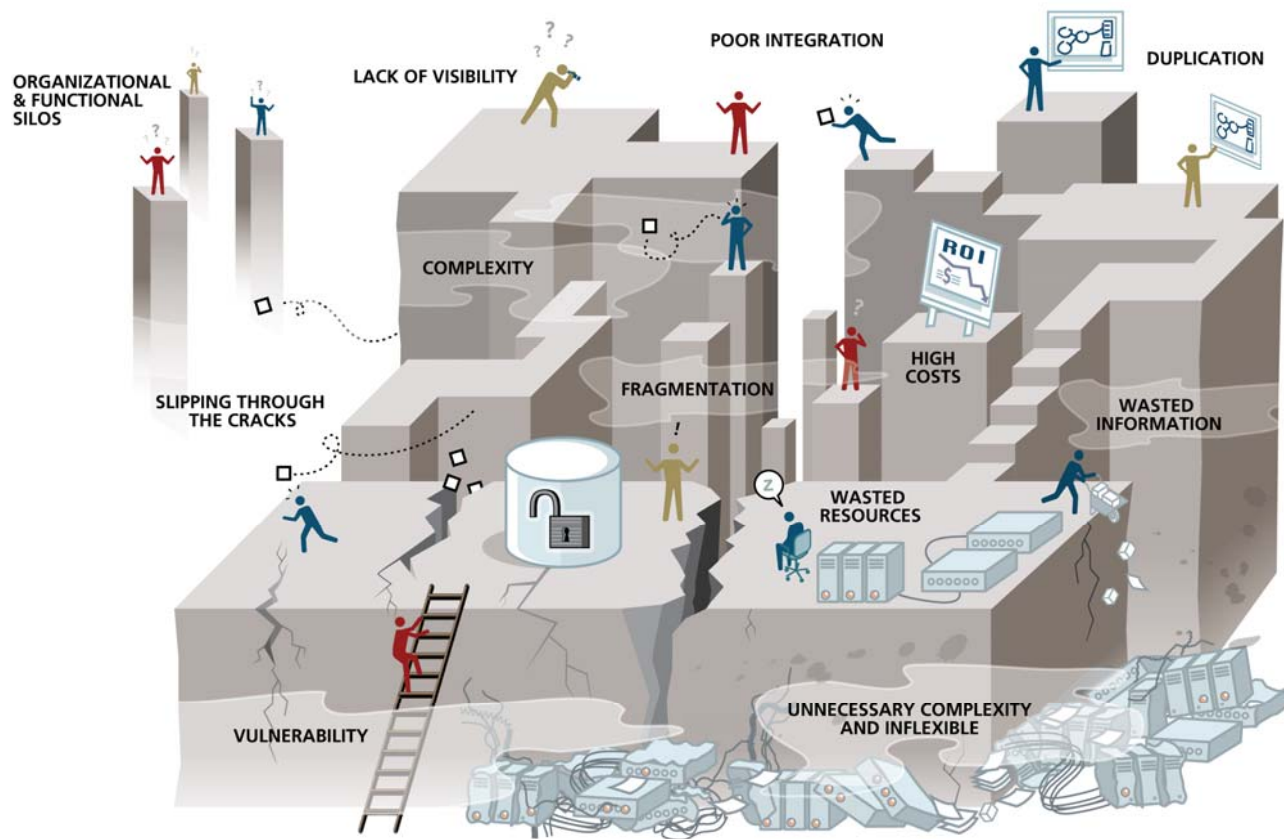




Enterprise Governance Today

Current state of risk & compliance

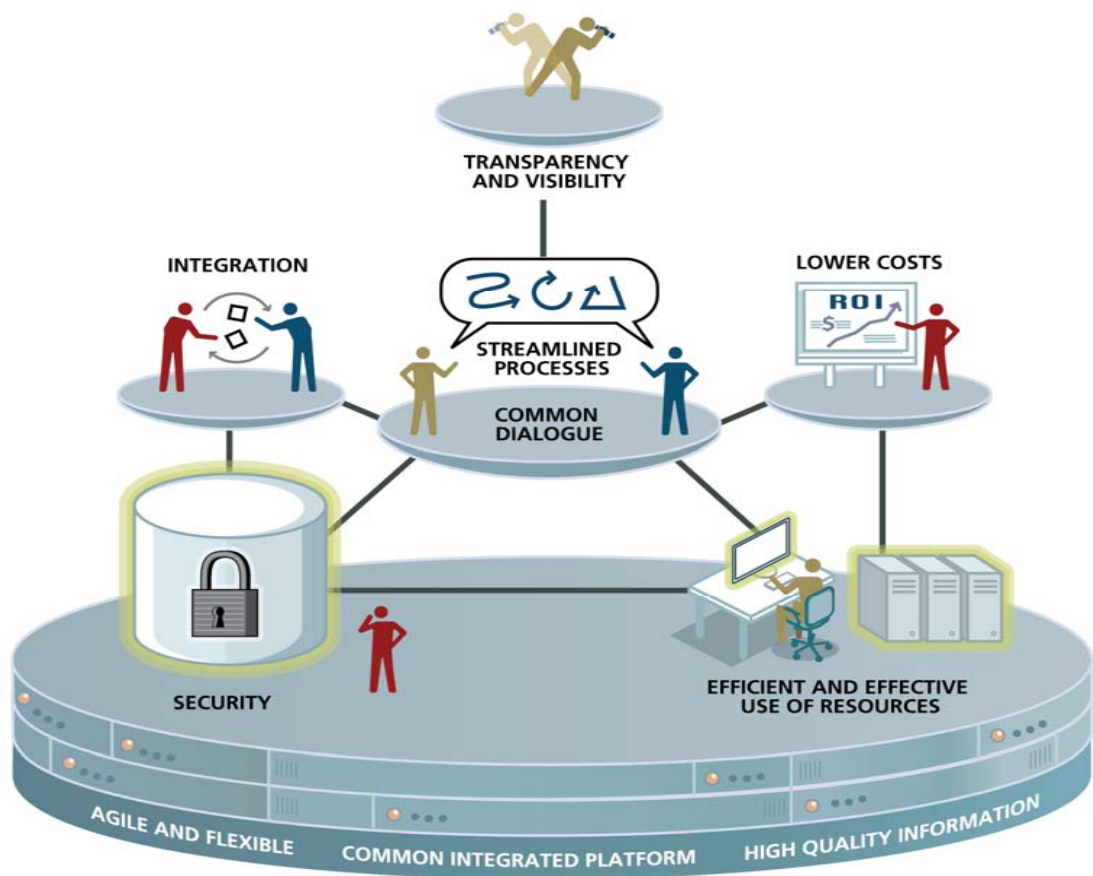
- Managed in silos
- Mostly reactive
- More projects than programs
- Handled separately from mainstream processes and decision-making
- People used as middleware
- Limited and fragmented use of technology





Future state of risk & compliance

Top down pro-active Governance



- Enterprise wide approach
- Integrated Governance Risk & Compliance
- Program-based approach
- Embedded within mainstream processes and decision-making
- Effective use of IT
- Architected solutions

